

The Psychological Impact of UAP/NHI Disclosure

A framework for understanding public response and psychological preparedness.

A condensed briefing of the full white paper, summarizing the psychological dimensions of UAP/NHI disclosure and the core recommendations for public communication, preparedness, and societal resilience.

AUTHORS

Jennice Vilhauer, PhD

Omer Eldadi, PhD

Tim Lomas, PhD

Gabriel de La Torre, PhD

Daniel Stubbings, PhD

Thomas Rabeyron, PhD

Overview of Findings

This report draws on research from the fields of psychology, public health, crisis communication, as well as historical precedent, to identify factors likely to shape public response to UAP/NHI disclosure and outline preparedness strategies that could support psychological resilience and reduce avoidable societal disruption.

Key findings include:

- There are different potential forms and stages of disclosure, and these are likely to vary in their psychological impact.
- Responses would likely vary widely across a continuum ranging from very positive to catastrophic, with perceived threat and personal relevance serving as primary drivers of psychological impact.
- Most people are expected to adapt without lasting psychological impairment.
- Vulnerability is likely to concentrate within smaller specific higher-risk populations.
- Communication quality and strategies may be as important as the disclosed information itself for determining response.
- The primary public health risk is likely to be a surge demand for services in a concentrated period of time resulting in system strain, not mass panic.
- Preparedness infrastructure can meaningfully influence resiliency and positive adaptation, whereas insufficient preparation would likely worsen psychological and societal outcomes.

Preparedness Recommendations:

The report recommends that public health authorities, policymakers, and clinical leaders consider preparedness measures, including developing a ***National Psychological Preparedness and Resilience Task Force***, that would guide mental health workforce training, scalable behavioral health capacity, public psychoeducation, community support infrastructure, interagency communication planning, and ethical guidelines for clinical engagement with UAP-related experiences.

Authors



Jennice Vilhauer, PhD, is a psychologist and leadership assessment and development expert. She has held clinical leadership and teaching positions at Emory University, Cedars-Sinai Medical Center, UCLA, and Columbia University. Her academic work has focused on future directed thinking and positive psychology. She is the author of *Think Forward to Thrive* and a featured expert for *Psychology Today* for the past 11 years, where she writes about cognitive psychology, human relationships, and the psychological response to UAP disclosure.



Tim Lomas, PhD, is a Psychology Research Scientist at Harvard University. He has published over 150 papers and 15 books relating to various aspects of wellbeing, involving topics/ approaches including linguistics, semiotics, art, nature, emotional dialectics, balance and harmony, systems theory, social theory, politics, gender, and Buddhism. His papers relating to the UAP topic include *Unidentified Anomalous Phenomena (UAP) Disclosure as Ontological Shock? Exploring Diversity Among Social Media Responses to a Congressional UAP Hearing* (2025), and *A History of Scientific Approaches to Unidentified Anomalous Phenomena: Time to Rethink Their Relegation to The Paranormal and Engage Seriously?* (2024).



Daniel Stubbings, PhD, is a Clinical Psychologist at Cardiff Metropolitan University and a member of the United Kingdom National Health Service. His research spans existential psychology, psychotherapy, and the psychological dimensions of anomalous experiences. Dr. Stubbings is the lead author of the peer-reviewed study *Who Sees UFOs? The Relationship Between Unidentified Anomalous Phenomena Sightings and Personality Factors* (2024), which examines personality traits and psychological correlates associated with UAP sightings.



Omer Eldadi, PhD, Omer Eldadi is an incoming postdoctoral researcher and Fulbright Scholar at Harvard University, where he will be hosted by Prof. Avi Loeb. He earned his PhD in Psychology from Reichman University's B. Ivcher School of Psychology, with a focus on team cognition and communication under high-stakes conditions. His research bridges cognitive, social, and emotional dimensions of psychology with astrobiology and SETI, exploring how human teams detect, interpret, and respond to interstellar phenomena and space missions. He has published on interstellar object significance frameworks, expert team communication in crisis scenarios, and the cognitive dimensions of AI-generated content detection.



Gabriel G. De la Torre, PhD, is an Associate Professor of Psychology, at the University of Cádiz, Director of Neuropsychology and the Experimental Psychology Lab, and Head of Department of Psychology. Dr. De la Torre is a clinical neuropsychologist and human factors specialist whose research ranges from Aerospace Psychology, adaptation to extreme environments, Cognitive Neuroscience and consciousness. He also studies the psychological and perceptual dimensions of UAPs and cognitive bias in SETI. He is the author of multiple peer-reviewed papers on the topic, including *Psychological Aspects in Unidentified Anomalous Phenomena (UAP) Witnesses* (2023), which examine cognitive, personality, and psychological correlates of UAP.



Thomas Rabeyron, PhD, is Professor of Clinical Psychology and Psychopathology at University of Lyon 2 and an Honorary Research Fellow at the University of Edinburgh. He is also the Director of Counseling Services at CIRCEE, a center for the study of exceptional experiences that he co-founded in 2009. A Laureate of the Institut Universitaire de France (2021), Dr. Rabeyron has published over 100 scientific articles and six books. His work—published in both French and English—focuses on exceptional experiences, including UFO sightings and related phenomena (he is an expert of the *Group for Studies and Information on Unidentified Aerospace Phenomena*, CNES), with particular emphasis on their relationship to trauma, psychological processes, and meaning making.

Executive Summary

Official disclosure regarding Unidentified Anomalous Phenomena (UAP) is already underway. Government agencies in several countries, including the United States, have acknowledged that UAP exist and that some incidents remain unexplained. Historically, on February 19, 2026, the U.S. President directed federal agencies to begin releasing previously classified records related to UAP and possible non-human intelligence (NHI), moving disclosure from speculation into an active governmental process.

What will ultimately be revealed remains unknown. Given that many individuals in positions of knowledge and authority (e.g., within the military and intelligence communities) have publicly stated that the evidence they have reviewed has led them to conclude that NHI are involved, prudence warrants taking this possibility seriously.

Yet no U.S. or international public health authority has formally addressed the potential psychological consequences of such a disclosure. In a digitally connected world, any disclosure of such nature by the U.S. government would be a global event. This absence of preparation constitutes an unaddressed vulnerability in national and global preparedness infrastructure and is a central concern of this report.

The findings synthesized in this report are derived from the best resources currently available to us, but the assessment is constrained by two important limitations. First, we have no privileged access to classified or otherwise undisclosed information that governments may possess regarding the nature, origin, or intent of UAP or NHI. Second, governments themselves may not yet possess complete answers and may still be attempting to understand the phenomenon. As a result, the recommendations presented here are designed to support preparedness across a broad range of potential disclosure scenarios rather than any specific outcome. Public responses and corresponding preparedness needs would likely differ substantially depending on the nature of the information ultimately disclosed (e.g., whether confirmed NHI were assessed as benevolent, indifferent, or hostile). This report is therefore intended to provide a foundational preparedness framework that can inform planning under conditions of uncertainty while remaining adaptable to future developments.

Given the uncertainty around the nature of UAP/NHI and that lack of historical context, the report does not predict specific outcomes. Rather, by examining likely psychological responses through psychological science, public health, risk communication, and historical precedent, it identifies factors likely to shape public response and outlines evidence-informed preparedness strategies designed to reduce disruption, support resilience, and protect vulnerable populations.

History shows that populations generally adapt to major shifts in knowledge. Scientific discoveries, technological revolutions, and societal disruptions have ultimately been

Executive Summary

integrated through education, cultural adaptation, and meaning making. However, disclosure is likely to unfold in stages, and responses at one stage cannot be assumed to predict those at another. Confirmation of NHI would be unprecedented, meaning that historical precedent offers guidance but not certainty.

A central finding is that public response will not be determined by the disclosed information alone, but by how that information is interpreted through complex psychological processes and the dynamic cultural ecosystems into which it arrives. Responses are therefore likely to vary widely. Most individuals will integrate new information without lasting impairment; while others may experience heightened uncertainty, worldview disruption, or distress. Vulnerability is likely to concentrate within specific subgroups, particularly those with preexisting mental health conditions, prior trauma, or social instability.

Communication quality, institutional trust, and resilience emerge as key factors for how people will respond to information revealed during the disclosure process. Evidence from public health and crisis communication consistently shows that transparent, coordinated, and credible communication supports adaptation, whereas contradictory messaging, perceived concealment, and misinformation can amplify distress and undermine trust.

From a public health perspective, our findings suggest the primary concern is system strain, not mass panic. Ambiguity surrounding disclosure, misinformation, and concentrated reassurance-seeking, could temporarily overwhelm behavioral health, communication, and educational systems. In a simultaneous global event, even a modest proportion experiencing significant difficulty could generate demand that exceeds routine capacity, potentially meeting the threshold of a public health emergency.

Accordingly, the report outlines preparedness measures designed to strengthen resilience rather than manage belief, including public health coordination, scalable behavioral health capacity, workforce preparedness, public psychoeducation, community support systems, crisis intervention infrastructure, communication planning, and ethical safeguards.

The central conclusion is that people are capable of adapting to and integrating disclosure-related information in ways that prove manageable over time, and that this adaptation can be meaningfully facilitated, or impeded, by institutional choices around communication and preparedness.

The window to prepare is now. Public health authorities, policymakers, and clinical, educational, and communication leaders are urged to begin evidence-informed preparedness planning in order to create the conditions under which individuals, institutions, and society can meet potentially transformative information with resilience, wisdom, and integrity.

Section I: The Event

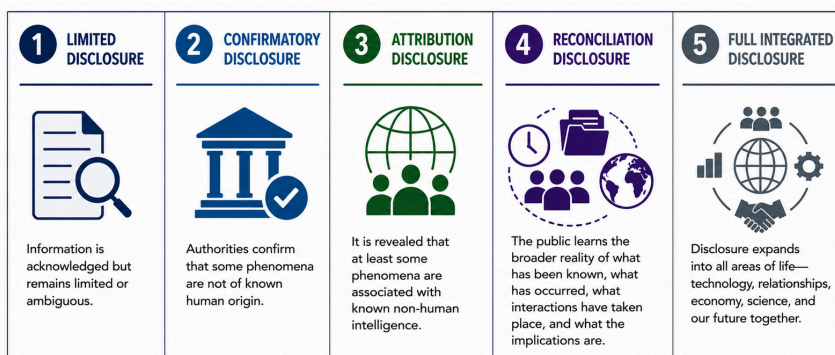
Key Term Definitions

- **UAP** (Unidentified Anomalous Phenomena): Observed phenomena that cannot currently be explained by known human technology or natural causes (e.g., weather)
- **NHI** (Non-Human Intelligence): Any intelligent entity not originating from human civilization or of known terrestrial nature, regardless of origin, form, or mechanism.
- **Disclosure**: The release of previously unavailable or classified information regarding UAP and/or possible NHI by governmental or institutional sources.

Disclosure Is a Process Unfolding in Stages

- The United States is currently engaged in limited disclosure of UAP and NHI information through governmental reports, military footage, congressional testimony, and declassified records.
- Disclosure is not happening in a void. It is occurring within a complex global environment shaped by culture, religion, politics, media, existing beliefs, institutional trust, and prior experiences.
- Different stages may produce substantially different levels of public engagement, uncertainty, psychological impact, and societal response.
- The ultimate scope and significance of future disclosures remain unknown.

Stages of Disclosure



1. *Limited Disclosure* (Current State)

- Governments acknowledge that some UAP are real but remain unexplained.
- Includes hearings, reports, declassified materials, and official investigations.
- Public response has generally been characterized by curiosity, skepticism, indifference, and limited societal disruption.

2. *Confirmatory Disclosure*

- Official and scientific confirmation that at least some observed phenomena cannot be attributed to known human technology or accepted scientific models.
- This would represent a major disclosure threshold with potentially significant societal, psychological and existential consequences.

Section I: The Event

3. Attribution Disclosure

- Official confirmation that at least some phenomena are associated with *known* non-human intelligence. An unprecedented event in human history.
- Likely to increase uncertainty, existential questioning, and demand for information.
- Personal relevance and threat become central questions.

4. Reconciliation Disclosure

- The public learns the broader reality of what has been known, what has occurred, what interactions have taken place, and what the implications are.
- Individuals and institutions grapple with the psychological, social, and trust-related consequences of newly revealed information.
- Potential for the greatest psychological impact is likely to occur here as people confront the implications while reevaluating existing worldviews.

5. Full Integrated Disclosure

- UAP/NHI knowledge becomes a sustained part of social reality.
- Implications extend across scientific, governmental, educational, economic, cultural, religious, and psychological domains. Requires long-term adaptation, transparency, communication, and institutional response.

Major Conclusions

- The United States is currently in a state of Limited Disclosure, characterized by official acknowledgment that some UAP are real but unexplained. Psychological response to limited disclosure has increased interest in UAPs but has not resulted in notable societal distress.
- The past will not predict the future. If disclosure progresses to stages that cross increasingly significant psychological thresholds, particularly if anomalous phenomena are confirmed to be non-human in origin, that would represent an unprecedented event in human history and could have substantially greater psychological and societal implications than current disclosure conditions.
- Other countries and 3rd parties may be in possession of UAP/NHI information and therefore preparedness planning should account for multiple disclosure scenarios, including controlled, uncontrolled, gradual, and accelerated forms of disclosure. Uncontrolled disclosure has potential for greater negative outcomes.
- Psychological and societal impact will depend not only on what is disclosed, but also on how information is communicated, interpreted, and integrated by the public.
- Understanding how people interpret, integrate, and respond to disclosure is essential for effective public communication and societal adaptation.

Section II: The Psychological Landscape

Historical Lessons

- Many historical discoveries challenged deeply held assumptions about humanity's origins, place in the cosmos, or the nature of reality itself. Human beings are generally capable of adapting to profound changes in their understanding of reality.
- Adaptation typically occurs over extended periods of time, often requiring years or generations rather than immediate acceptance.
- When trusted guidance is absent, uncertainty, misinformation, stigma, and distrust tend to fill the gap.
- Psychological harm may arise not only from the information disclosed, but from perceptions of institutional concealment or betrayal.

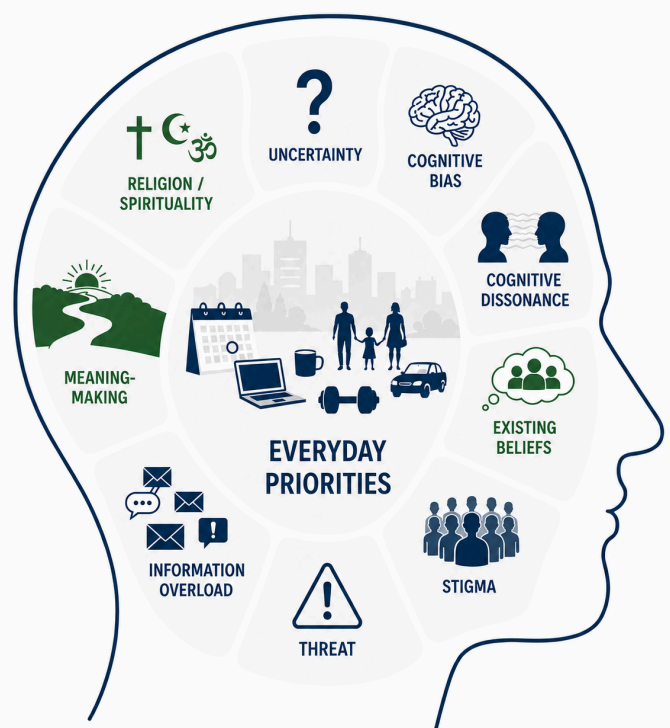
Current UAP Research

- Decades of stigma have discouraged reporting, limited scientific investigation, and constrained clinical preparedness. Which means we are entering this disclosure period without adequate information.
- Available evidence does not indicate that UAP witnesses are psychologically dysfunctional or pathological.
- Most witnesses appear psychologically healthy and primarily seek to understand and integrate their experiences. The experiences seem to cause limited psychological harm.
- Distress is often associated more with ridicule, dismissal, isolation, and lack of support than with the experience itself.
- Mental health professionals and support systems remain inadequately prepared to address disclosure-related concerns creating a major clinical response gap.

Psychological Processes Activated by Disclosure

Disclosure information lands in a preexisting psychological landscape and is interpreted through complex cognitive processing.

- **Uncertainty** is likely to be a primary driver of psychological response, particularly when questions about origin, intent, risk, and meaning remain unresolved.
- **Cognitive dissonance** is the discomfort of being confronted with a belief that does not match your own, and will lead individuals to assimilate, accommodate, or reject disclosure-related information depending on existing beliefs.



Section II: The Psychological Landscape

- **Confirmation bias**, motivated reasoning, and other cognitive biases will shape how evidence is interpreted across populations.
- **Ontological security**, our stable view of the world, is likely to be disrupted along with assumptions about reality, identity, and meaning as a result of disclosure events.
- **Meaning-making** processes help individuals integrate transformative information and restore psychological stability.
- **High cognitive load** may reduce careful evaluation and increase reliance on simplified narratives and emotionally salient interpretations.
- **Perceived threat** and **personal relevance** are likely to be two of the strongest determinants of psychological impact.



Section II: The Psychological Landscape

Existing belief systems

Information that aligns with existing beliefs is more likely to be accepted and integrated, while information that conflicts with core beliefs may be resisted, reinterpreted, or rejected.

- **Belief in non-human intelligence** is already widespread and is growing. Polling in 2021 suggests that approximately 75% of Americans believe life exists elsewhere in the universe, roughly 50% believe non-human intelligence may have visited Earth, and up to 41% believe at least some UAP may represent alien spacecraft. A 2025 international survey of 6,114 participants across 112 countries found that 95% believed intelligent extraterrestrial life exists, with nearly 63% expressing definitive conviction, suggesting that confirmation of non-human intelligence may represent a shift in certainty rather than a completely novel idea for many people.
- **Religious belief systems** are likely to shape the interpretation of the event, but no evidence indicates they are likely to make people more vulnerable to psychological distress. Most individuals that hold religious beliefs report that confirmation of non-human intelligence would not undermine their faith, although some groups may interpret disclosure through spiritual, prophetic, or apocalyptic frameworks.

Stigma

- UAP stigma functions as a socially reinforced belief system that frames the topic as unserious, unscientific, or unworthy of legitimate investigation, shaping how individuals, institutions, and society interpret UAP-related information.
- By promoting self-censorship, underreporting, social conformity, and pluralistic ignorance, stigma has distorted public discourse, limited scientific engagement, and reduced preparedness for disclosure events.

Implications for preparedness

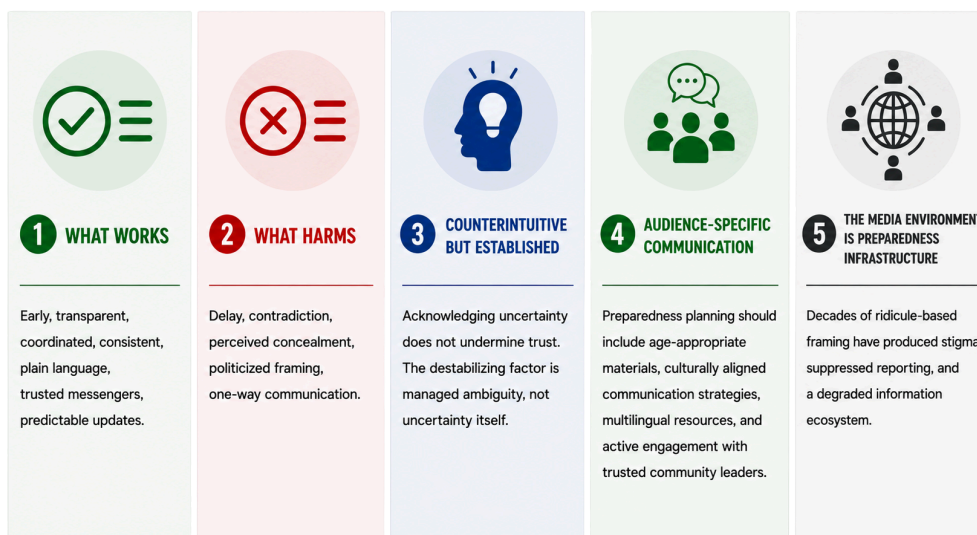
1. Public responses are not determined by the information itself but by the interpretation of that information.
2. The information arrives into a complex and very diverse psychological landscape which interacts in a dynamic way with how the information is communicated.
3. The same disclosure event can produce very different reactions in different people.
4. Preparedness focused only on the information may miss the psychological factors and the potential mediation points that ultimately shape public response.

Section III: Mediating Factors

Communication

Communication serves as the bridge between disclosure and public response, shaping how unfamiliar, uncertain, or potentially threatening information is interpreted.

- Evidence-based communication practices include early communication, acknowledgment of uncertainty, coordinated messaging, plain language, trusted messengers, transparency, and predictable updates.
- Communication failures, including delayed information, contradictory messaging, overconfidence, politicization, and one-way communication, can increase distress, erode trust, and encourage reliance on alternative narratives.
- What undermines trust is not uncertainty, but the perception that important information is being intentionally withheld or obscured.
- Media framing plays an important role in shaping public understanding, influencing stigma, perceived credibility, and susceptibility to misinformation.



Institutional Trust as a Mediator of Communication

- Institutional trust is one of the most important factors influencing how disclosure information is received and interpreted.
- Public trust in government is currently low, creating challenges for disclosure communication and credibility.
- Trust influences not only perception, but also behavioral outcomes, coordination, and collective response.
- In low-trust environments, individuals are more likely to discount official information, perceive greater threat, and seek information from alternative sources.

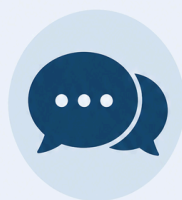
Section III: Mediating Factors

Psychological Resilience as a Mediating Factor

- Psychological resilience reflects the capacity of individuals and communities to adapt, maintain stability, and recover during periods of uncertainty or disruption.
- Resilience is not a fixed trait and can be strengthened through social support, effective communication, access to resources, and supportive community environments.
- Social connection, meaning-making, community cohesion, media literacy, and access to mental health support are among the strongest resilience factors.

Main Conclusion

- Communication quality, institutional trust, and psychological resilience are primary mediating factors that influence how disclosure is experienced and interpreted.
- These factors are highly interdependent: communication influences trust, trust influences interpretation, and resilience influences adaptation.
- Preparedness efforts should focus not only on what information is disclosed, but also on how it is communicated, who communicates it, and whether sufficient social and psychological resources exist to support adaptation.
- While these factors cannot determine outcomes, they can substantially influence the range and distribution of psychological responses across the population.



COMMUNICATION

Effective communication is the bridge between disclosure and public response. Clear, timely, consistent, and honest communication reduces uncertainty, builds understanding, and supports adaptive outcomes.



INSTITUTIONAL TRUST

Trust in institutions shapes how information is received and acted upon. It is built over time through integrity, transparency, consistency, and a demonstrated commitment to the public good.



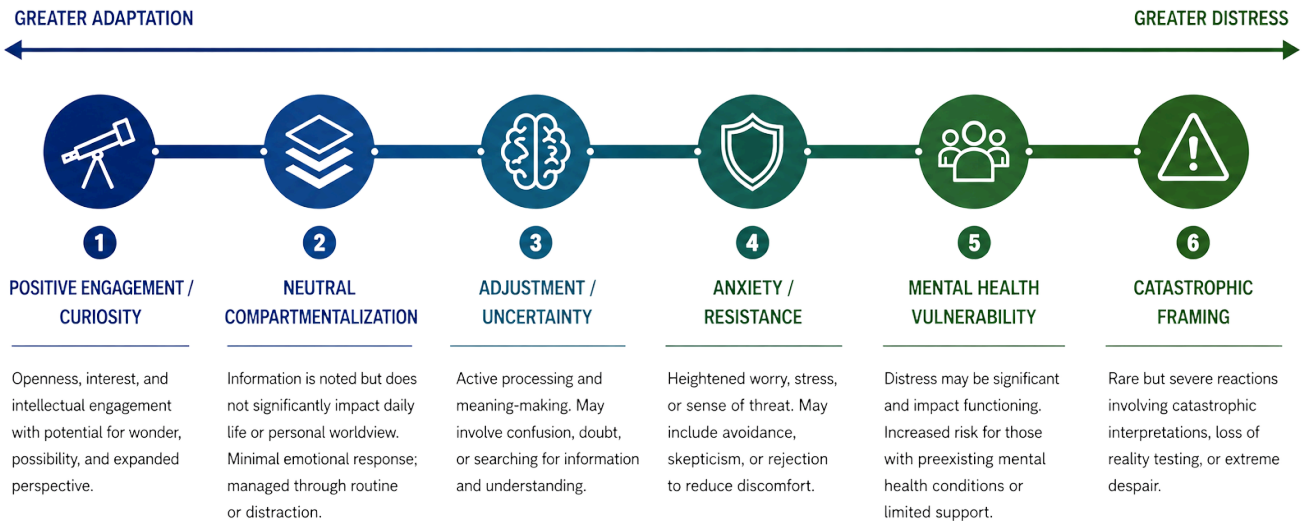
RESILIENCY

Resiliency influences how individuals and communities adapt to stress, uncertainty, and change. It can be strengthened through support, connection, and access to resources.

Section IV: The Psychological Response

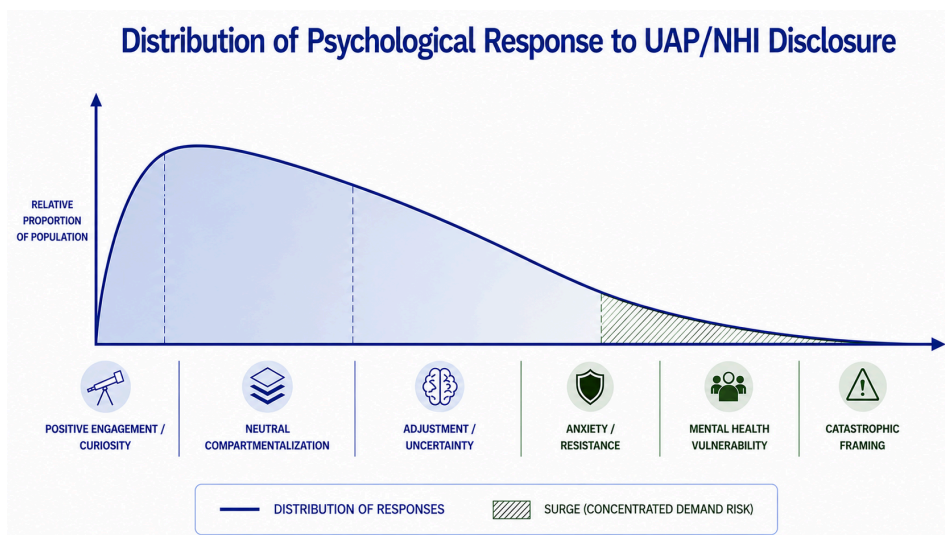
Psychological responses are expected to fall along a broad spectrum ranging from positive engagement and meaning-making to uncertainty-driven distress, vulnerability activation, and, in a small minority of cases, catastrophic interpretation. These categories are not fixed and individuals may move between them over time.

PSYCHOLOGICAL RESPONSE CONTINUUM



Distribution

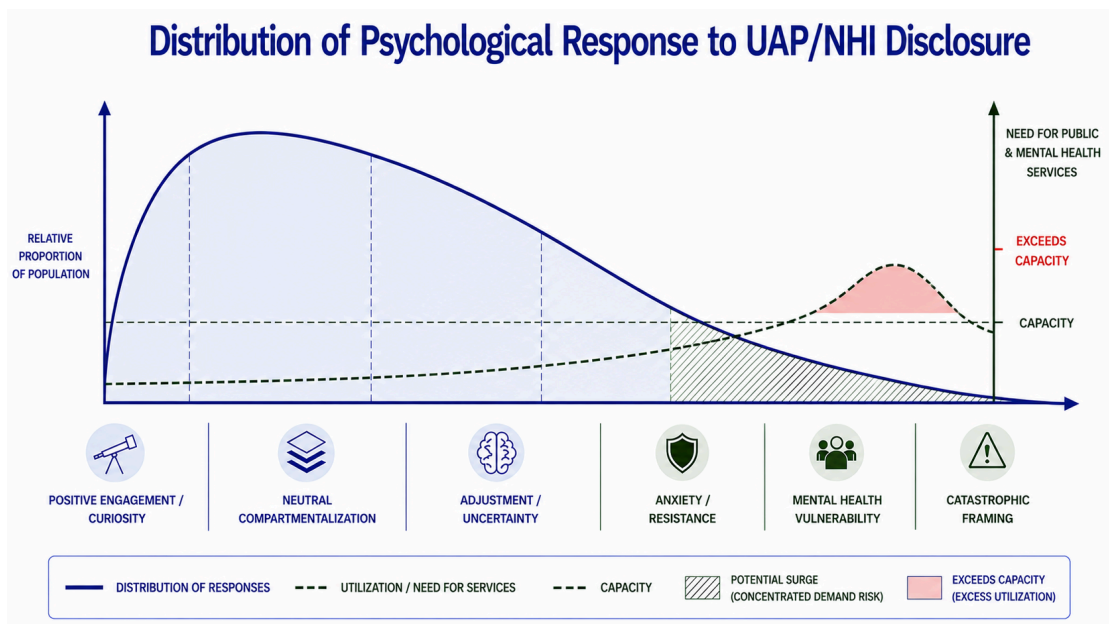
- Most individuals are likely to adapt over time, many may experience temporary disruption or distress, and a smaller subgroup may require more substantial psychological support.
- High-intensity reactions are likely to represent a minority response, but may exert disproportionate influence on public discourse, media narratives, and support systems.



Section IV: The Psychological Response

Risk

The greatest public health concern is concentrated demand for support services among psychologically vulnerable groups. Even modest activation rates within large populations may generate substantial demand when needs emerge simultaneously. Many mental health and public health services are currently underfunded and operate near capacity. A concentrated surge even among a small number of people could potentially exceed existing capacity and meet the criteria for a public health crisis.



Implications for Preparedness

- Psychological responses will vary across individuals, cultures, religions, age groups, and belief systems. As a result, a one-size-fits-all approach to communicating UAP/NHI information is unlikely to meet the diverse interpretive and support needs of the population.
- From a public health perspective, the central concern is not only the proportion of individuals affected, but also the timing, intensity, and concentration of demand for psychological support and other public services.
- When clear, cohesive, and trustworthy information is absent, uncertainty and anxiety may increase, leading to greater concentrations of distress and a higher potential for surge demand on support systems.
- Catastrophic framing is likely to represent a minority response. Its importance lies less in overall prevalence than in the potential intensity and social organization of affected subgroups.

Section V: Recommendations for Preparedness and Response







While the precise nature of future disclosure remains unknown, decades of research from psychology, psychiatry, public health, disaster response, risk communication, and the study of transformative information provide a meaningful foundation for preparedness planning. The evidence reviewed throughout this report suggests that psychological outcomes will be shaped not only by what is disclosed, but also by factors such as perceived threat, personal relevance, uncertainty, existing belief systems, communication quality, and institutional trust.

Although no historical event provides a perfect analogue for the confirmation of non-human intelligence, the available evidence identifies several factors likely to influence adaptation and highlights practical steps that may strengthen societal and psychological resilience across a range of possible disclosure scenarios.

National Psychological and Resilience Preparedness Task Force

- No existing national framework currently exists to coordinate the psychological, educational, public health, and societal dimensions of advanced UAP/NHI disclosure.
- A multidisciplinary task force would provide a centralized mechanism for planning, coordination, monitoring, and adaptation across evolving disclosure scenarios.
- Preparedness is most effective when developed before systems are strained, allowing institutions to respond proactively rather than reactively to emerging challenges.

PSYCHOLOGICAL AND RESILIENCE PREPAREDNESS

PRIORITY		OBJECTIVE
	1. PUBLIC HEALTH AND BEHAVIORAL HEALTH COORDINATION	Coordinate preparedness across federal, state, and local systems, including monitoring psychological and behavioral response indicators and identifying vulnerable populations.
	2. DEVELOP SCALABLE MENTAL HEALTH SURGE CAPACITY	Build flexible systems that can temporarily expand access to support during periods of concentrated psychological demand.
	3. CLINICAL TRAINING, WORKFORCE PREPAREDNESS, AND THE EXISTING CLINICAL RESPONSE GAP	Prepare mental health professionals to address uncertainty-related distress, ontological disruption, anomalous experiences, stigma, and disclosure-related meaning-making.
	4. PUBLIC PSYCHOEDUCATION	Develop clear public-facing resources that normalize diverse responses, support coping, reduce uncertainty-driven distress, and guide people toward support when needed.
	5. COMMUNITY-BASED SUPPORT SYSTEMS	Engage schools, workplaces, religious organizations, and local institutions as primary environments for support, stabilization, and meaning-making.
	6. CRISIS INTERVENTION SYSTEMS	Incorporate 988, emergency psychiatric services, mobile crisis units, and related systems into preparedness planning with flexible expansion capacity if needed.

Section V: Recommendations for Preparedness and Response

Communication and Information Environment Preparedness

Research across crisis communication, disaster response, and public health consistently demonstrates that contradictory messaging, delayed disclosure, perceived concealment, and fragmented institutional responses can increase distress, erode trust, accelerate misinformation, and contribute to social fragmentation. Conversely, transparent, coordinated, and psychologically informed communication can reduce uncertainty, support adaptive coping, strengthen public trust, and promote social cohesion, making communication preparedness a central component of disclosure planning.

Recommendations for building an evidence-based communication infrastructure:

- **Cross-Agency Coordination** — Establish coordinated communication protocols to promote consistency, reduce avoidable confusion, and support coherent public understanding as disclosure evolves.
- **Crisis Communication Frameworks** — Utilize evidence-based communication practices, including early communication, acknowledgment of uncertainty, consistent messaging, predictable updates, rapid correction of misinformation, and trusted messengers.
- **Information Environment Monitoring** — Monitor misinformation, panic narratives, institutional trust, behavioral shifts, and indicators of psychological distress to identify emerging risks and areas of system strain.
- **Audience-Specific Communication** — Develop age-appropriate, culturally adaptive, multilingual, and context-sensitive communication resources that address diverse interpretive frameworks and informational needs.
- **Meaning-Making and Adaptive Response Frameworks** — Provide contextual frameworks that help individuals and communities understand, interpret, and adapt to disclosure-related uncertainty in constructive and psychologically resilient ways.
- **Media and Information Environment Engagement** — Promote evidence-informed reporting, reduce stigma and sensationalism, encourage responsible communication under uncertainty, and support rapid correction of demonstrably false information.

Ethical Considerations

- **Avoid Premature Pathologization** — Normal adaptation is not clinical impairment
- **Preserve Transparency and Institutional Integrity** — Communicate honestly
- **Protect Psychological Autonomy** — Support informed decision-making with accurate information
- **Promote Equity in Access to Support** — Ensure vulnerable and under served populations have access to resources and assistance.
- **Develop Professional Competence** — Prepare clinicians and healthcare professionals

Closing Summary

Throughout history, humanity has repeatedly encountered discoveries that challenged its most basic assumptions about the world. Over and over, ideas that once seemed impossible or threatening eventually became integrated into our understanding of the world and part of our daily lives, leading to a more accurate and complete view of reality. Adapting to transformative information is a recurring feature of human history. Confirmation that some UAP are not of known human origin, or that non-human intelligence exists, would be unprecedented. But there is little reason to assume it would exceed our capacity to eventually adapt.

What matters most is communicating the information with integrity. Psychological research consistently shows that people cope better with difficult truths than with prolonged uncertainty, contradiction, and perceived deception. Uncertainty becomes far more manageable when met with honesty, context, and trustworthy leadership, and far more destabilizing when information is fragmented, withheld, or delivered in ways that erode public trust. Importantly, even when prior concealment has eroded trust, that trust can be restored through transparency, consistency, and genuine engagement.

Preparation is more than crisis planning. It is an expression of confidence in the public's right and ability to face reality, even when the truth is complex. A society cannot navigate what it cannot clearly perceive, nor grow beyond the limits of what it is allowed to understand.

Preparation is also a moral imperative. Most people will adapt in time, but a minority of individuals, (e.g., those already living with mental illness, trauma, isolation or fixed identity-based beliefs) are more likely to be destabilized by information that significantly disrupts their view of the world and their perceived safety within it. The measure of any society's response to extraordinary change is how well it protects those least equipped to absorb the impact. Safeguarding the vulnerable is a central ethical responsibility, not a secondary logistical concern.

The advancement of knowledge has always depended on a willingness to question old assumptions and revise them in light of new evidence and humanity has risen to that challenge time and time again. While it is unknown what will be revealed, the UAP/NHI disclosure process is an opportunity to demonstrate, once again, who we have always proven ourselves capable of being.

References *

1. **De La Torre G.** Psychological Aspects in Unidentified Anomalous Phenomena (UAP) witnesses. *Int J Astrobiol.* 2024;23:e4. doi:10.1017/S1473550423000289
2. **De La Torre G,** Garcia MA. The Cosmic Gorilla Effect or the Problem of Undetected Non Terrestrial Intelligent Signals. *Acta Astronaut.* 2018 May;146:83–91. doi:10.1016/j.actaastro.2018.02.036
3. **Eldadi O,** Tenenbaum G, Loeb A. Surveys on the Existence of Extraterrestrial Intelligent Life and Effects of Revealing Expert Consensus [Internet]. arXiv; 2025 [cited 2026 Apr 5]. Available from: <https://arxiv.org/abs/2512.00364> doi:10.48550/ARXIV.2512.00364
4. **Eldadi O,** Tenenbaum G, Loeb A. Eldadi, O., Hochman, G. (2025). Between Skepticism and Closure: Coherence-Seeking, Epistemic Humility, and the Evaluation of Anomalous Scientific Claims. In-press.
5. **Lomas T.** Unidentified Anomalous Phenomena (UAP) Disclosure as Ontological Shock? Exploring Diversity Among Social Media Responses to a Congressional UAP Hearing. *J Humanist Psychol.* 2025 May;65(3):654–88. doi:10.1177/00221678241251871
6. **Lomas T,** Masters MP, O'Malley A. Conspiracies, Cover-Ups, Compartmentalization, and Containment: The Complex, Secrecy-Related Information Dynamics of Unidentified Anomalous Phenomena. *World Futur.* 2025 Dec;1–33. doi:10.1080/02604027.2025.2585942
7. **Rabeyron T.** *The Psi Enigma: When Anomalous Experiences Transcend the Everyday World.* Abingdon, Oxon ; New York, NY: Routledge; 2026.
8. **Rabeyron T.** When the Truth Is Out There: Counseling People Who Report Anomalous Experiences. *Front Psychol.* 2022 Jan 4;12:693707. doi:10.3389/fpsyg.2021.693707
9. **Rabeyron T.** Why Most Research Findings About Psi Are False: The Replicability Crisis, the Psi Paradox and the Myth of Sisyphus. *Front Psychol.* 2020 Sep 18;11:562992. doi:10.3389/fpsyg.2020.562992
10. **Stubbings, D,** Ali S, Wong A. Who Sees UFOs? The Relationship Between Unidentified Anomalous Phenomena Sightings and Personality Factors. *J Sci Explor.* 2024 Apr 9;38(1):11–27. doi:10.31275/20243153

*This is a partial list of peer-reviewed publications by the authors of this report. For a full list of references and source materials used, please see the full-report online at www.disclosure.org